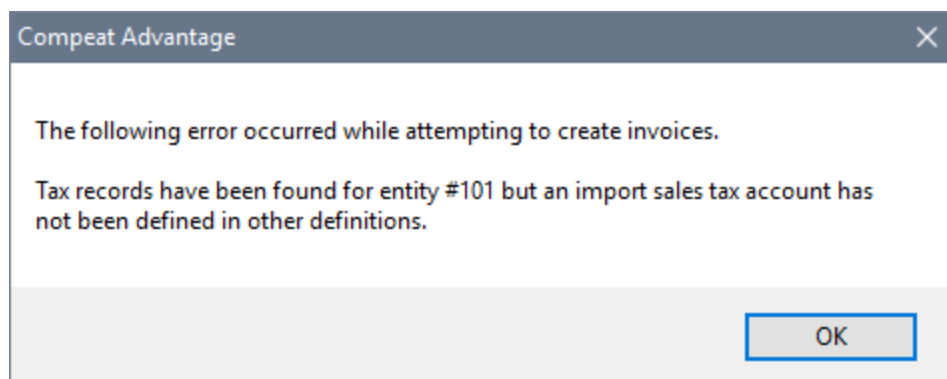




FAQ

[Home](#) / [FAQ](#) / I get a sales tax error when importing invoices. What do I do?

I get a sales tax error when importing invoices. What do I do?



If you receive the above error when importing invoices, then the invoice you are attempting to import contains a tax, but no default sales tax account is defined for your entity. Any time tax is imported, the system must know which GL account it will be coded to once the invoice is created.

To define a GL account, go to **Setup > Other Definitions**. On the **Accounts Payable** tab, enter your *Invoice Import Sales Tax Acct #* under *GL Accounts*:

Other Definitions (edited)

Copy Import e-filing data from Compeat Payroll

Entity

Entity # 2 San Antonio

Accounts Payable ACH Invoice & Check Settings Accounts Receivable General Ledger Sales Accounts Payroll Misc. I Misc. II E-filing File Archives

Entities / Bank Codes

AP Invoices Paid By: San Antonio

Post Standard Costs To: San Antonio

Computer Checks Bank: OP ACCT (PROV)

Manual Checks Bank: MGR ACCT (PROV)

Advantage IQ Bank:

GL Accounts

AP Acct # 2000

Purchase Discount Acct # 5000

Inventory in Transit Acct #

Fulfillment Variance Acct #

Invoice Import Sales Tax Acct # 1390

Invoice Import Freight Acct #

Grace Period: 20

Posting Choices

Post AP Invoices & Manual Checks

Summary Detail

Post Computer Checks

Summary Detail

Post Manual Payments

Summary Detail

Invoice & Check GL Reference Info

Vendor Number/Doc Number

Name/Doc Date

Name/Doc Number

Computer Checks Sorted By

Vendor Code Vendor Name

Make sure to **Save** your changes.

Note: Each entity has its own *Other Definitions* record. You must ensure the tax account is defined for all entities to avoid this situation in the future.

Was this Helpful ?

yes

no

Items aren't auto-populating when I place orders. What do I do?

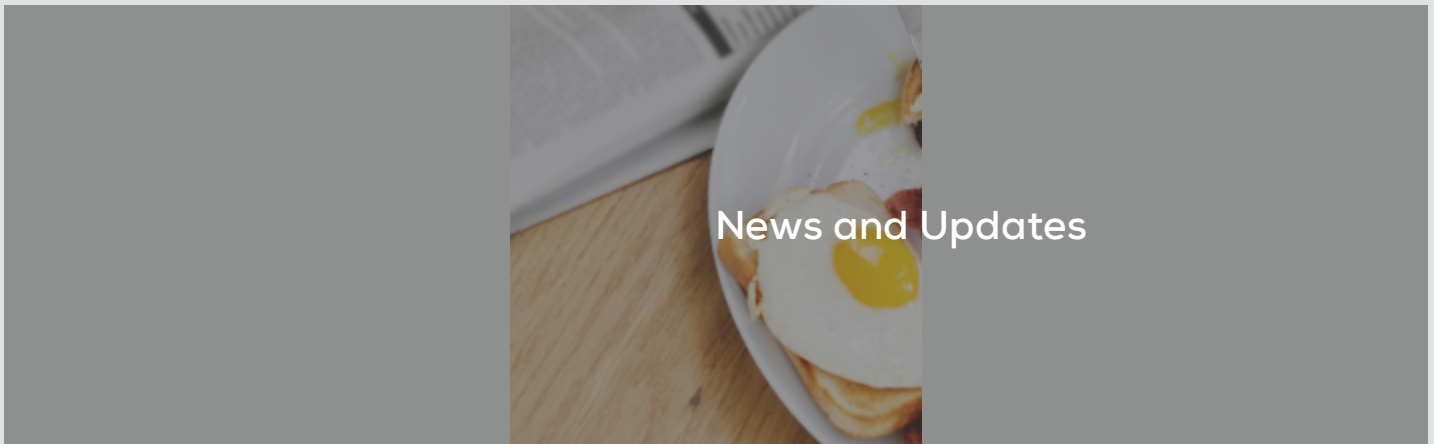
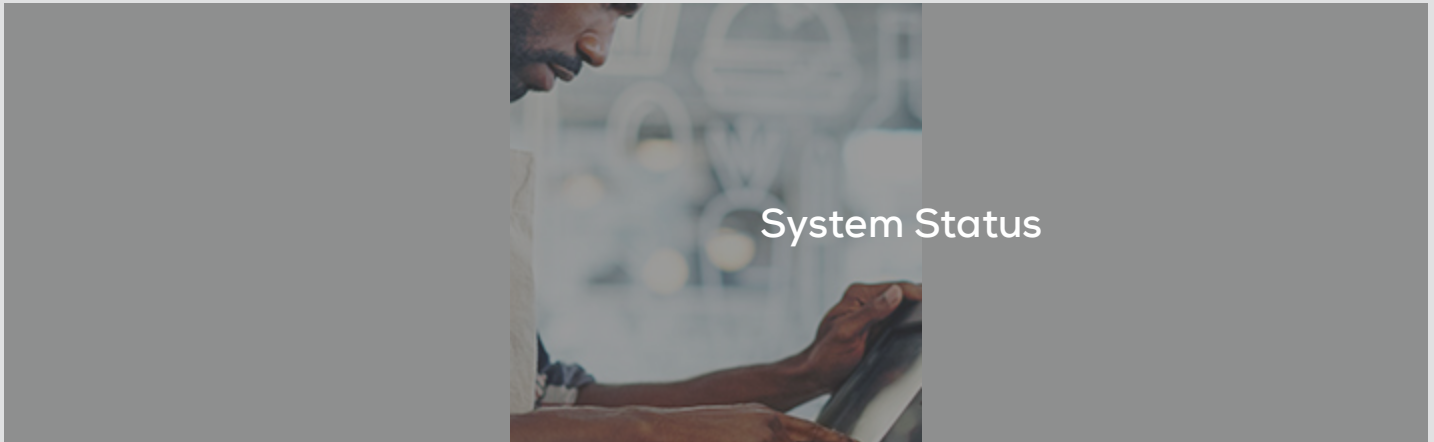
I get a catch weight error when importing invoices. What do I do?

What kind of barcode scanner can I use for mobile inventory counts?

[I get a sales tax error when importing invoices. What do I do?](#)

How do I fix an item that was matched incorrectly on an invoice or order guide import?

Learn More



Need More Help?



Submit a Ticket



Enhancements and Feedback