

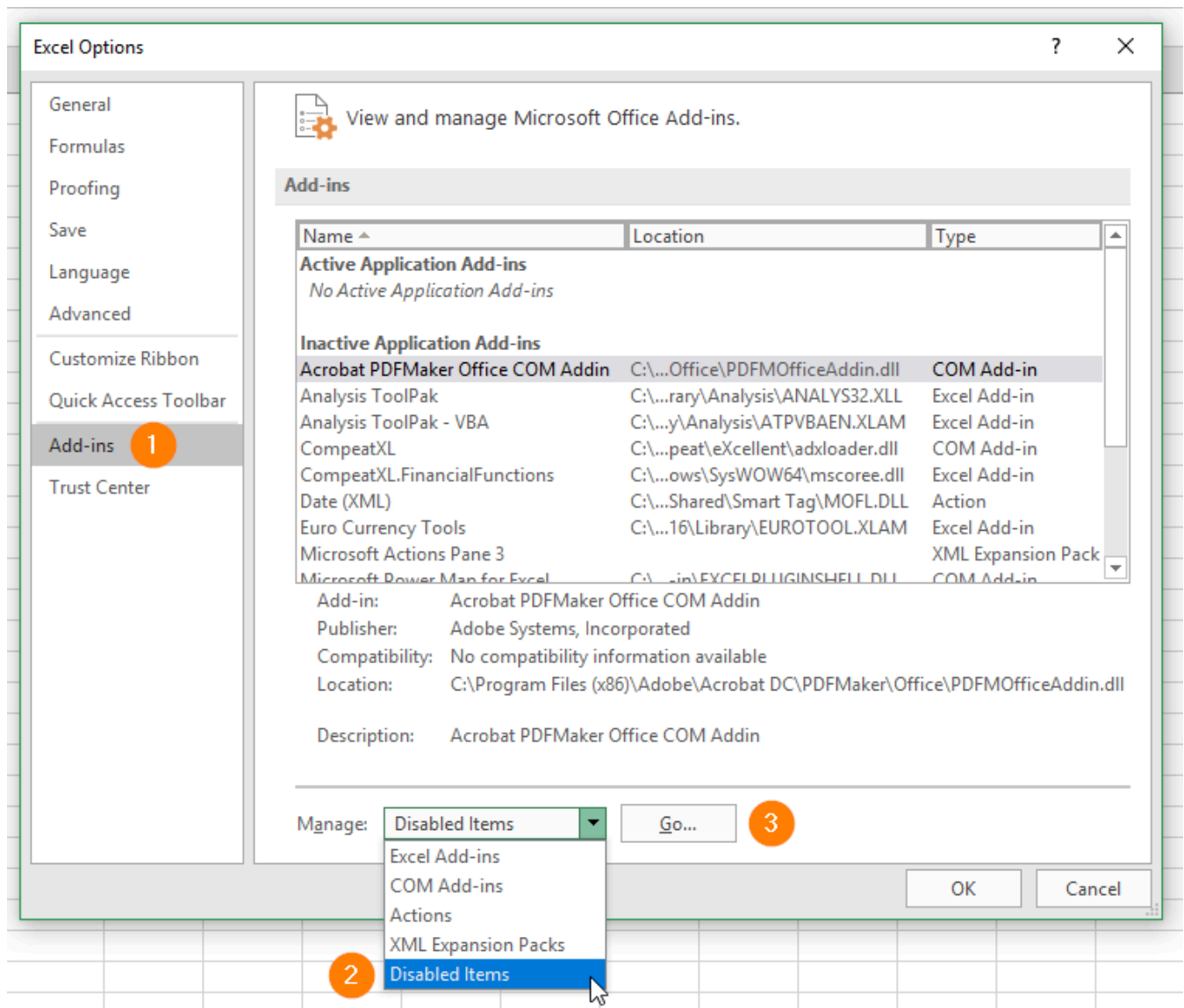


FAQ

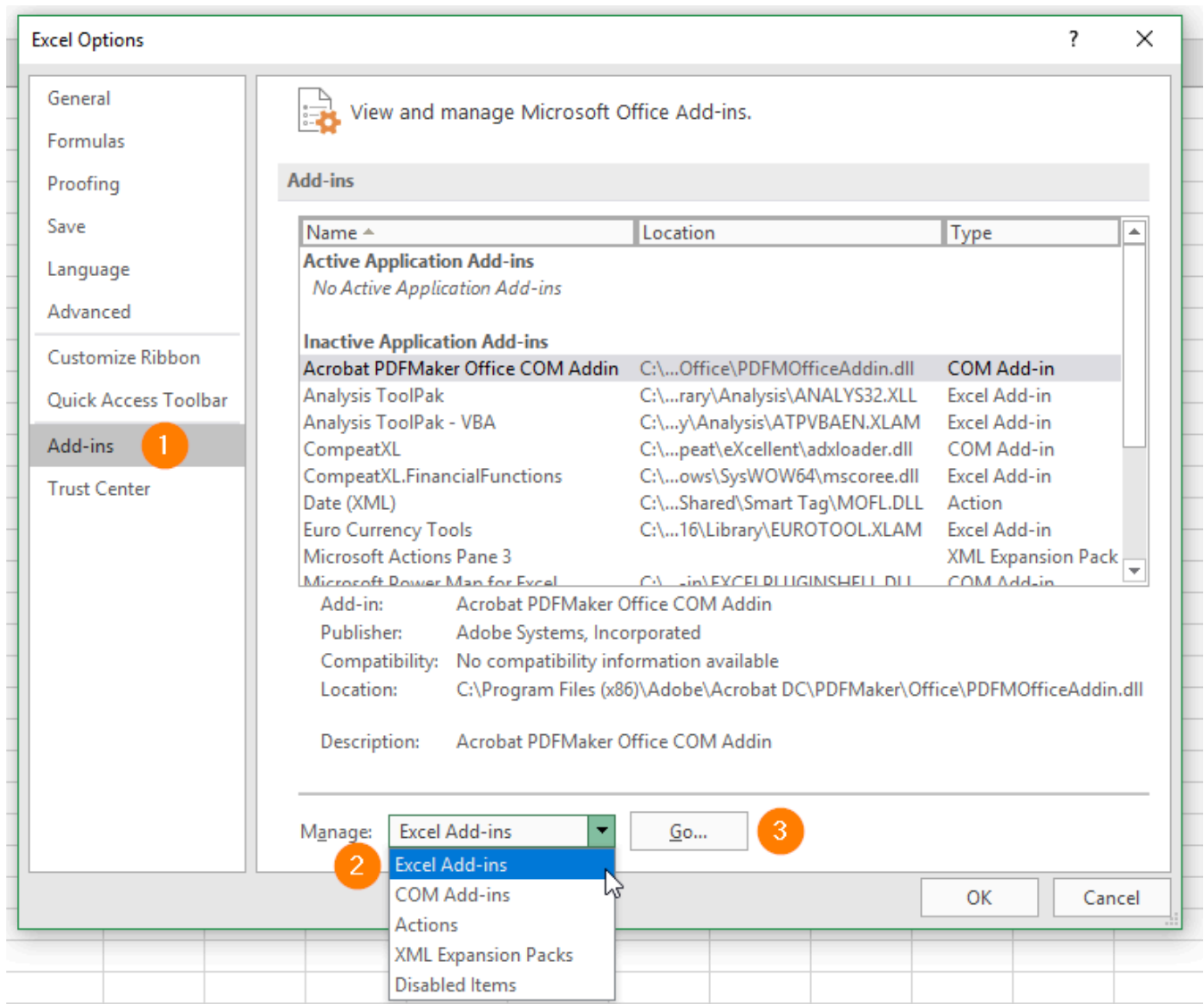
[Home](#) / [FAQ](#) / I get a #NAME error on my eXcellent financial spreadsheet. What do I do?

I get a #NAME error on my eXcellent financial spreadsheet. What do I do?

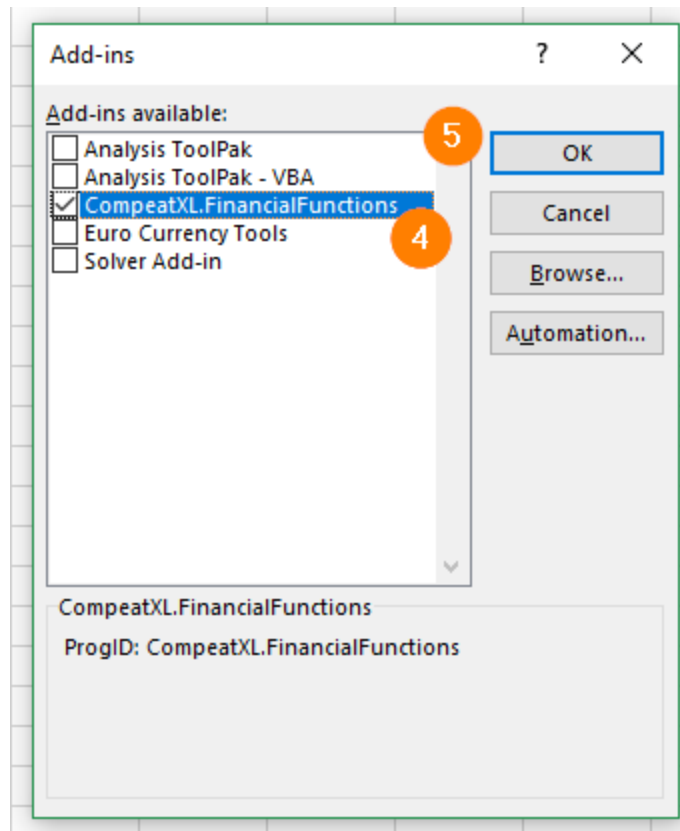
If your spreadsheet populates #NAME errors upon calculation, it is likely that your eXcellent Financial Functions add-in was disabled.



1. Go to **File > Options > Add-ins**.
2. Select **Disabled Items** from the *Manage* drop-down.
3. Click **Go**.
4. In the **Disabled Items** box, highlight the **compeatxl** add-in.
5. Click **Enable**.



1. Go to **File** > **Options** > **Add-ins**.
2. Select **Excel Add-ins** from the *Manage* drop-down.
3. Click **Go**.
4. Select the **CompeatXL.FinancialFunctions** box.
5. Click **OK**.



If the error persists, uninstall the function via the **Add/Remove Programs** feature on your computer. Once uninstalled, re-install the function by visiting the [Compeat website](#).

Important: The eXcellent function installs to a user's specific login/profile on a computer station. If another user signs in to the same computer station under a different login (for example, an IT tech), they must install the eXcellent function to their profile in order to run the add-in.

If you have questions or encounter an issue with the eXcellent add-in, please contact the Compeat Support Team at support@compeat.com.

Was this Helpful ?

yes

no

How do I delete an inventory item?

How do I delete a user in Advantage?

How do I download Compeat?

Advantage says my password is invalid. What do I do?

Our purchase units have disappeared. What do we do?

I'm get an error when I log into Advantage. What do I do?


I don't remember my security password. How can I re-set It?

How do I re-set a user password in Advantage?

Advantage says the scanned document I am trying to attach is too big. What do I do?

Is there a way to have our daily sales emailed to us?

Learn More

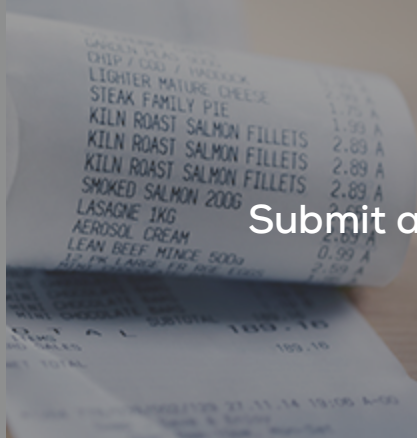


System Status



News and Updates

Need More Help?



Submit a Ticket



Enhancements and Feedback