

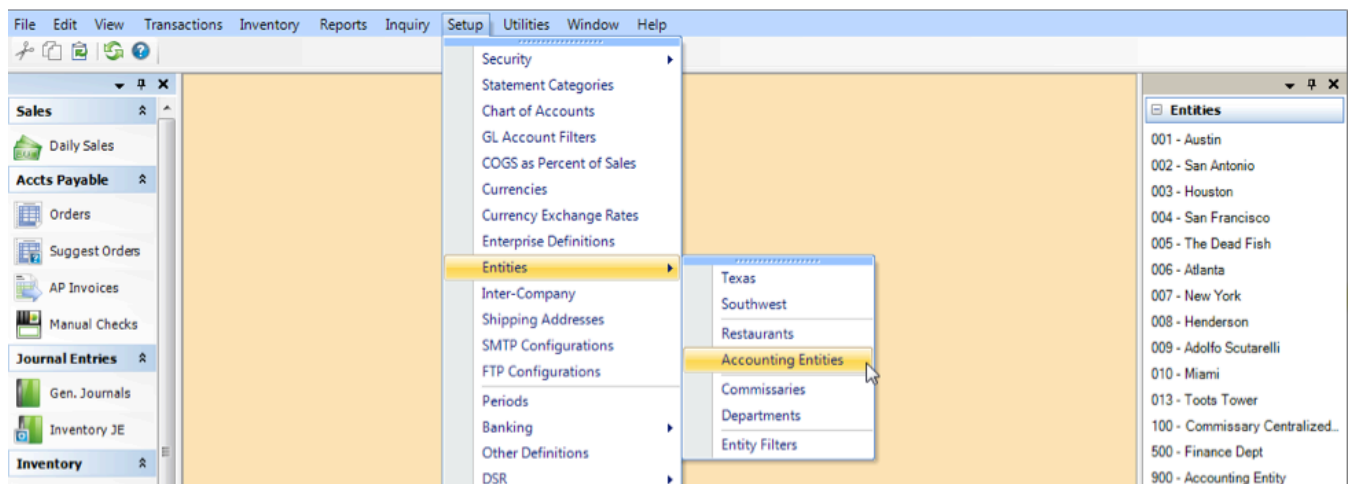


## FAQ

[Home](#) / [FAQ](#) / How do I change the background color of an entity?

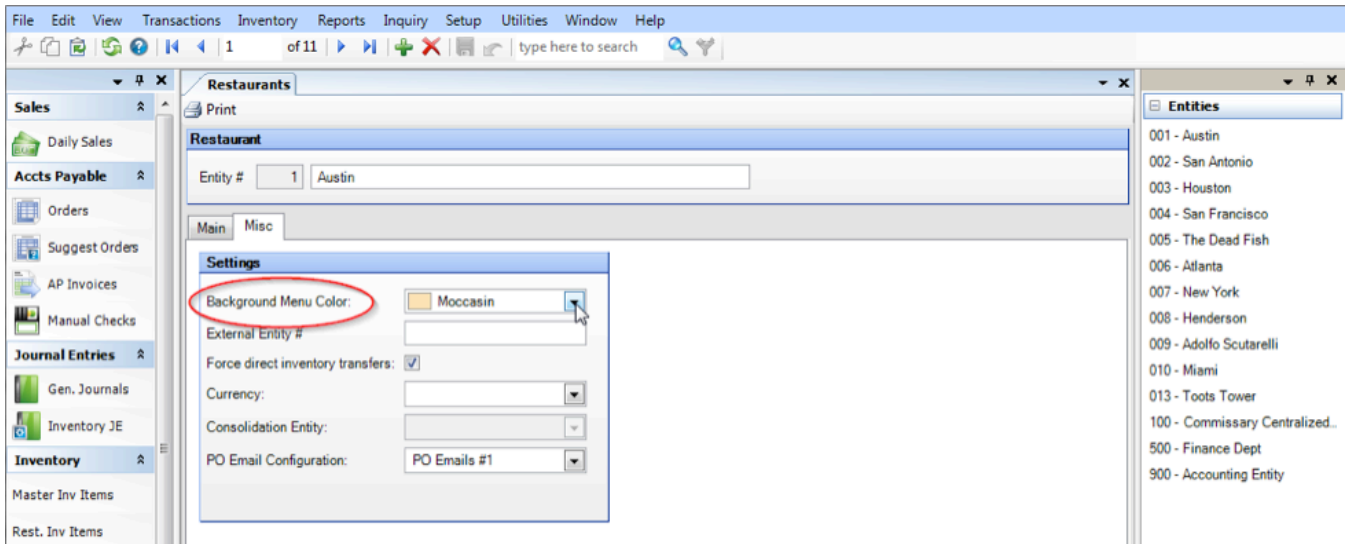
### How do I change the background color of an entity?

Changing the background color is super easy, and is a great way to distinguish between entities.



1. Go to **Setup > Entities**.

2. Select either **Restaurant** or **Accounting**.
3. Choose your desired entity and select **OK**.



1. On the tab, choose a color from the **Background Menu Color** drop down.
2. **Save** your changes.

Was this Helpful ?


yes

no

How do I change my employee's myWorkforce login?

---

## Learn More



System Status



News and Updates

---

## Need More Help?



Submit a Ticket



Enhancements and Feedback

Copyright © 2000–2016 Compeat, Inc. All Rights Reserved.

Austin, TX 78727 | (512) 279-0771 | support@compeat.com